

Lancashire  
**music**  
service

# Music Centres

2020 - 2021



**APPLY ONLINE**

[www.lancshitemusichub.co.uk/enrol](http://www.lancshitemusichub.co.uk/enrol)

**Lancashire**

County  
Council



# About our Music Centres...

Our network of Music Centres has been providing musical opportunities for children and young people across Lancashire for over 50 years. They provide regular, after-school opportunities for young musicians of all levels of experience to play together in ensembles as well as offering group and individual tuition.

Membership of music centre ensembles costs only £60 per year, subsidised through our Music Hub funding from Arts Council England, and tuition starts from as little as £6.50 per lesson (based on a group lesson). Enrol online at [www.lancashiremusic hub.co.uk/enrol](http://www.lancashiremusic hub.co.uk/enrol) or complete and return the forms at the back of this brochure.



## Why Learn Music?

### 1. Music is fun!

All the other benefits of learning music aside, you should learn to play or sing because it's something enjoyable and you will possess a skill that many people wish they had.

### 2. Academic achievement

Studies show a direct link between academic, language and motor skill development and learning music, as it stimulates and strengthens certain parts of the brain.

### 3. Music relieves stress

Just like most activities you enjoy, playing music or singing is known to relieve stress. It can enhance your self-awareness and sense of accomplishment, making you feel more positive.

### 4. You can build your confidence and self-esteem

Mastering a new skill or learning that song you always loved is a great confidence boost. Learning to sing or play a musical instrument develops your sense of aspiration and achievement.

### 5. It's a social activity

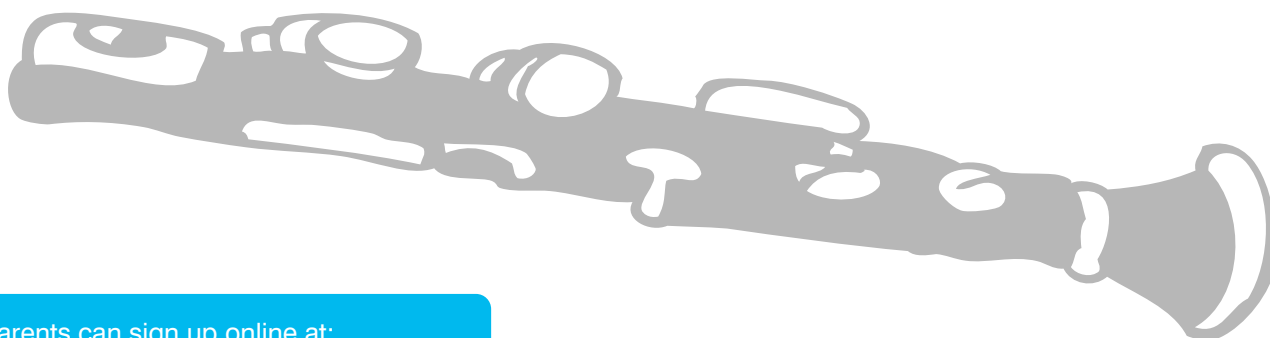
You have more opportunities to meet people that share the same interests through taking part in ensembles, concerts and workshops. You develop life-skills such as how to listen and relate to others, and work as a team

### 6. It will develop your creativity

Music stimulates the creative side of your brain and makes your mind open up towards new ideas and helps you express your emotions.

### 7. Learning music teaches discipline and responsibility

Learning to play or sing teaches you that the amount of effort you put into your practice will reflect in the way you sound. Mastering a new skill always takes time and patience.



Parents can sign up online at:  
[www.lancashiremusic hub.co.uk/enrol](http://www.lancashiremusic hub.co.uk/enrol)

# Music Centres

## Opportunities to learn, play and perform together

Our network of centres across Lancashire provides **regular, after-school opportunities for young musicians of all levels of experience to play together in bands and ensembles**, offering an ideal progression route from Whole Class Ensemble Tuition alongside opportunities for more advanced students. We also offer **group and individual tuition** at all of our centres.

**Lancaster** (Thursday) - Lancaster Royal Grammar School, East Road, Lancaster LA1 3EF

**Head of Lancaster Music Centre -**  
**David Shooter 07887 830989**  
[david.shooter@lancashire.gov.uk](mailto:david.shooter@lancashire.gov.uk)

Lancaster  
Activities 

**Poulton** (Wednesday) - Hodgson School, Moorland Road, Poulton-le-Fylde FY6 7EU

**Head of Poulton Music Centre -**  
**Rachel Hughes 07500 881431**  
[rachel.hughes@lancashire.gov.uk](mailto:rachel.hughes@lancashire.gov.uk)

Poulton  
Activities 

**Lytham** (Thursday) - Lytham St Annes Technology and Performing Arts College, Worsley Road, Lytham St Annes FY8 4DG

**Head of Lytham Music Centre -**  
**Amy Campbell 07887 830990**  
[amy.campbell@lancashire.gov.uk](mailto:amy.campbell@lancashire.gov.uk)

Lytham  
Activities 

**St Bede's Lytham** (Tuesday) - St Bede's Catholic High School, Talbot Road, Lytham FY8 4JL

**Head of St Bede's Music Centre -**  
**Amy Campbell 07887 830990**  
[amy.campbell@lancashire.gov.uk](mailto:amy.campbell@lancashire.gov.uk)

St Bede's  
Activities 

**Kirkham** (Monday) - Kirkham and Wesham Primary School Nelson St, Kirkham, Preston PR4 2JP

**Head of Kirkham Music Centre -**  
**Julie Rayton 07824 434282**  
[julie.rayton@lancashire.gov.uk](mailto:julie.rayton@lancashire.gov.uk)

Kirkham  
Activities 



**Preston** (Tuesday and Thursday) - Fulwood Academy, Black Bull Lane, Preston PR2 9YR

**Head of Preston Music Centre -**  
**Chris Cull 07850 025785**  
[christopher.cull@lancashire.gov.uk](mailto:christopher.cull@lancashire.gov.uk)

Preston  
Activities 

**Ormskirk** (Wednesday) - Ormskirk School, Wigan Road, Ormskirk L39 2AT

**Head of Ormskirk Music Centre -**  
**Chris Cull 07850 025785**  
[christopher.cull@lancashire.gov.uk](mailto:christopher.cull@lancashire.gov.uk)

Ormskirk  
Activities 

**Chorley** (Monday) - Southlands School, Clover Road, Chorley PR7 2NJ

**Acting Head of Chorley Music Centre -**  
**Gareth Crane 07887 830991**  
[Imsmc@lancashire.gov.uk](mailto:Imsmc@lancashire.gov.uk)

Chorley  
Activities 

**Burnley** (Tuesday) - Shuttleworth College, Burnley Road, Padiham BB12 8ST

**Head of Burnley Music Centre -**  
**Abbey Blackledge 07825 755499**  
[abbey.blackledge@lancashire.gov.uk](mailto:abbey.blackledge@lancashire.gov.uk)

Burnley  
Activities 

**Pendle** (Thursday) - Pendle Vale College, Oxford Road, Nelson BB9 8JG

**Head of Pendle Music Centre -**  
**David Parkins 07887 830994**  
[david.parkins@lancashire.gov.uk](mailto:david.parkins@lancashire.gov.uk)

Pendle  
Activities 

For up to date details and times of activities at each centre please visit [www.lancashiremusicclub.co.uk](http://www.lancashiremusicclub.co.uk)

### How do I contact Lancashire Music Service?

Each Music Centre's first point of contact is the Assistant who welcomes you when you arrive at the centre and is happy to help with any day to day matters. Outside of Music Centre hours the best person to contact is the Head of Centre by phone or email.

Please contact Pauline Franic on **01257 517113** 9am-5pm weekdays [Imsmc@lancashire.gov.uk](mailto:Imsmc@lancashire.gov.uk)  
Pauline looks after the Music Centre administration and can also help if you have any issues or concerns. We will also keep you up to date with relevant news and opportunities via the Music Hub e-newsletter. To sign up to the newsletter please visit [www.lancashiremusicclub.co.uk](http://www.lancashiremusicclub.co.uk)

# What happens at Music Centre

## Ensembles

Whatever your level of experience, making music is most fun when you can play together with others. From samba to strings, concert bands to choirs, all our Music Centres offer a range of ensembles for young musicians at all levels. Some are suitable for those with no previous experience, others are designed to follow on from learning an instrument in school through Whole Class Ensemble Tuition, and we also provide ensembles suitable for those with a little more experience.

For an up to date list of ensembles at each centre please visit [www.lancashiremusicclub.co.uk](http://www.lancashiremusicclub.co.uk) or contact the Head of Centre (see page 3).

Cost: £75 per year (access to all ensembles)

## Tuition

Each music centre has a range of teachers offering instrumental tuition in woodwind, strings, brass, guitar/ukulele and percussion/drums. Vocal and music theory tuition are also available at some of our centres.

- Lessons are usually delivered in small groups and are a minimum of 20 minutes
- Individual lessons are also available
- Students will need to provide their own instrument (rental available)
- Students have access to online resources to support their instrumental learning through Charanga Music World

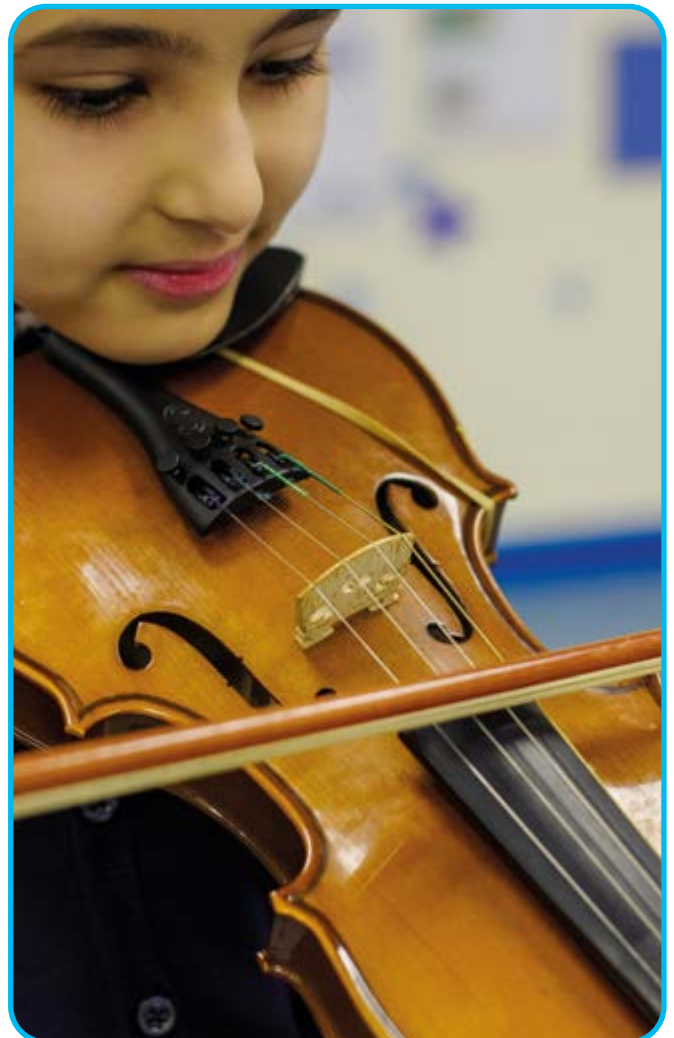
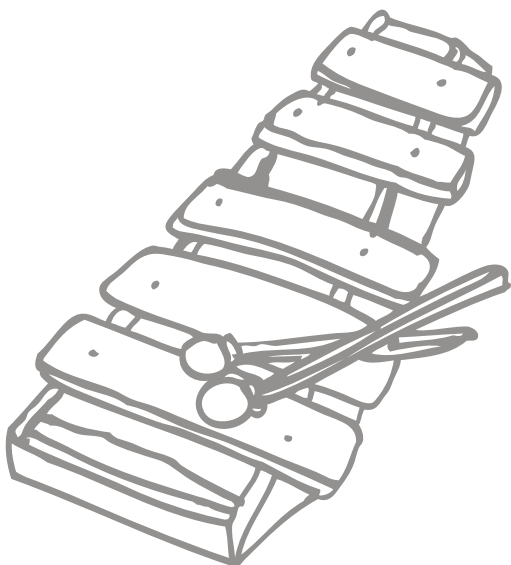
Please contact the Head of Centre for further information (see page 3)

### Costs

Annual Ensembles fee (access to all ensembles)	£75.00
Group (max 4 students)	£7.50 p/lesson
20 minute individual	£12.00 p/lesson
30 minute individual	£14.00 p/lesson
40 minute individual	£18.00 p/lesson

## Performances and workshops

Each Music Centre organises performances, from informal end of term concerts, to annual regional events where ensembles perform together with other groups and County Ensembles. There is also the opportunity to take part in one-off workshops and attend concerts and gigs.



# Music Centre FAQs

## How do I join?

Complete the application and medical forms. You can apply online at: [www.lancashiremusichub.co.uk/enrol](http://www.lancashiremusichub.co.uk/enrol)

You can join a Music Centre Ensemble at any time throughout the school year once you have completed the enrolment forms.

Instrumental and vocal lessons can only start at the beginning of each half term after the application and medical details have been received. Please make sure your details reach us by deadline dates listed (see page 11). Applications received after the deadline dates shown will be held and processed for the following terms intake.

## Can I visit a Centre before joining?

Yes! Please contact the Head of Centre to arrange your visit. For centres and contact details please see page 3.

## Is there any help available with fees?

If your child is eligible for Pupil Premium, you may be able to access this funding for music tuition. Please discuss this directly with your school. If the school are paying for tuition please enter the school address and contact name in the billing section of your application form. If your school is not able to support your application through pupil premium you may still qualify for support. Please see page 8 for details.

More advanced young musicians can also apply for help with fees to organisations such as awards for Young Musicians [www.a-y-m.org](http://www.a-y-m.org) or Future Talent [www.futuretalent.org](http://www.futuretalent.org)

## How can I keep up to date with Music Centre sessions and performances?

Each Head of Centre will keep members up to date. We also have a Lancashire Music Hub website with events and news listings and a newsletter (see below).

## What is the difference between a group lesson and ensemble?

An ensemble is a band, choir or orchestra who perform music together. A group lesson is focused around learning instrumental or vocal skills. With groups of 2 the lesson will be 20 minutes. With groups of 3 or 4, lessons will be 30 minutes. When a group lesson is not possible (as there is only one pupil) then we'll contact you to discuss alternatives.

## What if my child can't come to a lesson or ensemble session?

We do expect members to be committed but, if absence is unavoidable, please contact the Head of Centre and give as much notice as possible. Sessions or lessons missed due to short term illness or cancellation by the pupil cannot be refunded (see page 7 for terms and conditions).

## How do I know how my child is getting on with their lessons?

All pupils are given a Practice Diary which should be kept up to date each week. This enables you to keep in touch with your child's progress and you can communicate with the teacher.

## Exams

If your child would like to take an examination, please discuss this with their teacher as there are many options available.

## Can my child hire an instrument?

We do have instruments available to hire and we also offer the loan of selected "endangered instruments" free of charge. Some instruments may not be suitable for all children - please contact us or speak to the Head of Music Centre for advice. Instruments are collected (and returned) from our warehouse in Chorley and are your responsibility for the duration of the hire.

## How do I find out about other musical opportunities for my child?

We have a parents/carers email newsletter to keep you up to date with musical opportunities, advice and recommendations to support your child's musical development [www.lancashiremusichub.co.uk/site/#newsletter](http://www.lancashiremusichub.co.uk/site/#newsletter)

You can also sign up to our newsletter at [www.lancashiremusichub.co.uk/site/#newsletter](http://www.lancashiremusichub.co.uk/site/#newsletter)

To find out more about GDPR, please read more at the official ICO website: [www.ico.org.uk](http://www.ico.org.uk)

## What if we want to stop lessons?

Lessons can stop at the end of a full term, providing you give us 6 weeks notice and email your cancellation request to: [lmsmc@lancashire.gov.uk](mailto:lmsmc@lancashire.gov.uk)

You will need to return any hired instruments to the Warehouse in Chorley Tel **01257 517127**.

## How do I pay for activities and instrument hire?

You will be invoiced each term via Lancashire County Council after the Music Centre sessions have started.

# Lancashire's County Ensembles

## Bringing together talented young musicians from across Lancashire

Our county ensembles enable **committed young musicians to take their music making to an advanced level**, working alongside professional musical directors and tutors. They meet regularly to rehearse, take part in residential courses and tours, and perform across the county and further afield.

The County Ensembles have developed partnerships with national organisations such as BBC Philharmonic Orchestra, Music for Youth, and the National Youth Jazz Orchestra and rehearse and perform with visiting professional artists. They also work regularly with Lancashire schools and Music Centres, inspiring younger musicians.

**Lancashire Youth Symphony Orchestra**

**Lancashire Schools Symphony Orchestra**

**Lancashire Youth Brass Band**

**Lancashire Youth Jazz Orchestra**

**Lancashire Schools Jazz Orchestra**

**Lancashire Youth Concert Band**

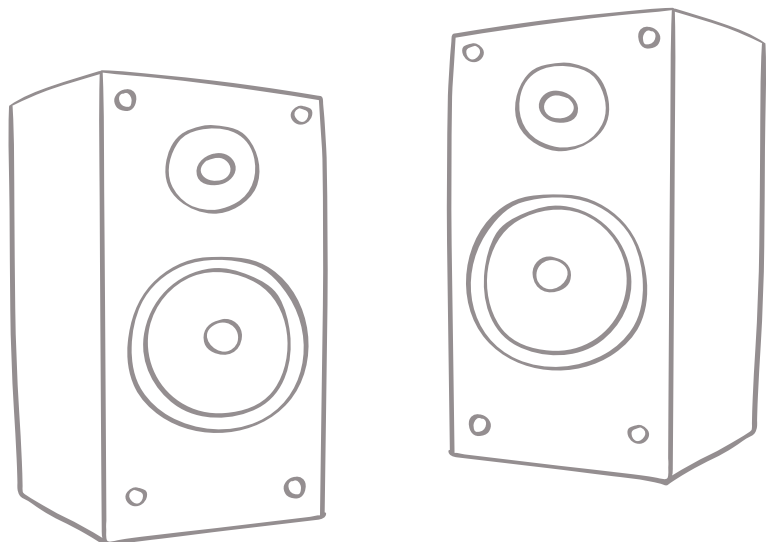
**Jazz Youth Voice Ensemble**

For more details about County Ensembles please contact Ann Connal (administration) **01257 517108**  
[imsce@lancashire.gov.uk](mailto:imsce@lancashire.gov.uk)

### Costs

Annual Membership    £120

Membership also includes access to ensembles at local music centre



# Term and Conditions

## Health and Safety/Safeguarding

Lancashire Music Service teachers will take every reasonable precaution to ensure the health, safety and welfare of all visitors to the Music Centre.

All Lancashire Music Service teachers are: appropriately qualified and appointed in line with the Safer recruitment guidelines after interview, audition, medical, Right to work in the UK, Disclosure and Barring Service (DBS) enhanced checks. All teachers are updated with new developments through a programme of in service training, including Child Protection, Lancashire Safeguarding Children Board (LSCB), e-learning for Sexual Exploitation, Disqualification by Association, Information Governance and Health and Safety.

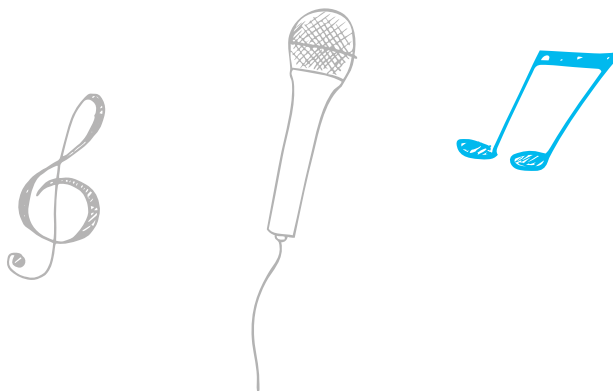
Any visiting adults without a Lancashire DBS will be supervised by LMS teachers.

1. Music Centre teachers will be responsible for the Health and Safety of students and adults whilst on the premises and a qualified first aider from Lancashire Music Service will be in attendance at each centre.
2. The safety of students travelling to and from the Music Centre, concerts and rehearsals is the responsibility of the Parent/Carer.
3. In the interests of safeguarding, it is requested that adults who are on the premises whilst accompanying pupils to and from instrumental lessons and ensembles restrict their movement to a designated area. (check with the Head of Centre)
4. When students who have had an instrumental lesson remain on the premises ie. waiting to participate in an ensemble activity, they should wait in the room with their teacher and NOT wander round the building.
5. Parents/Carers are asked to ensure their child understands that they **MUST NOT LEAVE THE PREMISES DURING AND BETWEEN LESSONS AND ENSEMBLES.**
6. The Music Centre uses the school/college by permission of the head teacher/principal. It is therefore essential that every student exhibits only the highest standard of personal conduct whilst on the premises. We reserve the right to withdraw a student from an activity in the event of unacceptable behaviour.
7. Students and parents/carers must enter the music centre by the main entrance only and sign the attendance register when entering and leaving the premises.
8. We expect the highest standard of behaviour from students and all decisions and instructions of teachers should be respected and followed at all times. We reserve the right to withdraw a student from an activity in the event of unacceptable behaviour.
9. When adults need to assist students to carry larger instruments into their lesson/ensemble, having done so, should return to the designated waiting area until it is time to collect the student.
10. It is requested that when parents/carers and students drive cars into School/College grounds they do so with extreme care and at their own risk.
11. The Music Service accepts no responsibility for the security of personal belongings.

## Service Delivery Terms

The Lancashire Music Service (LMS) (a Business Unit within Lancashire County Council) will provide tuition/musical activities at the venue named on the application form under the following terms and conditions.

1. Lessons - Participation in lessons can only start at the beginning of each term/half term after the application form and medical consent has been completed and received by the Music Service.  
  
Music Centre Ensemble Membership – Participation in Ensemble activities can start anytime after the application form and medical consent has been completed and received by the Music Service.
2. Lessons, so far as possible, will be given at the same time and on the same day each week during term time but some variation may be necessary to accommodate venue activities.
3. Group Lessons will be taught for a minimum of 20 minutes not exceeding four pupils per group. Individual Lessons will be taught for 20 minutes, 30 minutes or 40 minutes and will be clearly indicated on the contractual agreement.
4. If pupil numbers become non-viable LMS reserves the right to cancel tuition giving a ½ terms notice. In so far as is practicable, alternative options will be offered.
5. Failure to attend 3 consecutive lessons or more without prior notification, will be received as tuition cancelled. The scheduled time slot will then be made available to another student. Any invoices raised for the current term will still require payment for non-attendance of scheduled lessons.
6. Lessons not provided by LMS will not be charged for. If your child misses a lesson for whatever reason a charge will be made for that lesson
7. It is envisaged that the number of sessions will be 34 over an Academic Year.
8. Pupils are responsible for the safe keeping of their musical instrument and Lancashire County Council does not accept responsibility for any loss or damage to such instruments.
9. Any complaints should be emailed to **lancs.music@lancashire.gov.uk**
10. Data protection  
Your privacy is important to us. For more information view our Privacy Statement at **www.lancashire.gov.uk/data-protection** and click 'Service and project specific privacy notices' then 'Lancashire Music Service'.  
The name of the Data Controller is Lancashire County Council.  
The nominated contact for the Data Protection is  
The Data Protection Officer, P.O. Box 100,  
County Hall, PRESTON PR1 0LD.  
  
This data will be processed for the purpose of administration of the Music Centre Activities.



## Billing Information

PLEASE WAIT FOR AN INVOICE BEFORE MAKING ANY PAYMENTS

1. Music Centre Ensemble Membership Fees are payable annually/termly for each academic year and non-refundable. Membership will be automatically renewed unless we receive written/email notification requesting to withdraw from membership. Students who play in the following County Ensembles ie. LYSO/LSSO, LYCB, LYJO/LSJO, LYBB and JYVE are exempt from Music Centre Ensemble Fees at one centre.  
CHARGES  
Annual Membership £75.00 or Termly Membership £30 (per term)  
Mid term intake will be charged £15.00 (pro rata) for the first term then the standard termly charge will be applied thereafter.
2. Tuition Fees (non-refundable) are payable at the start of each term and will automatically renew thereafter until written Notification /email is provided of withdrawal.
3. County Hall Income and Debt Management team will issue an invoice and when invoices are raised they are due for payment immediately. Re-payment plans are available for each invoice issued - please see reverse of invoice for details. If payment is not received /a repayment plan has not been set up within 30 days of the date on your invoice LMS have the right to withdraw your child from music lessons for the coming term, however you will still be liable for payments for the duration of the current school term.
4. Lancashire Music Service is unable to provide refunds for any reason except for teacher absence credits These will be applied against your next terms invoice. Where refunds cannot be issued against a new term invoice you will receive notification requesting bank details to apply the refund.
5. Pupil Premium is allocated to schools for pupils qualifying for free school meals and you may be able to access this funding for music making activities at the music centre. Please ask school to email [lmsmc@lancashire.gov.uk](mailto:lmsmc@lancashire.gov.uk) to confirm this money is to be used for Music and enter the school address and school contact name in the billing section of your application.  
If your child's school will not support lessons using Pupil Premium, you qualify for a free group lesson and ensemble membership if you meet the criteria listed below.

PROOF OF EXEMPTION WILL BE REQUIRED – WITHOUT THIS AN INVOICE FOR TUITION WILL BE RAISED

**To claim you must be in receipt of, one or more of the following benefits:**

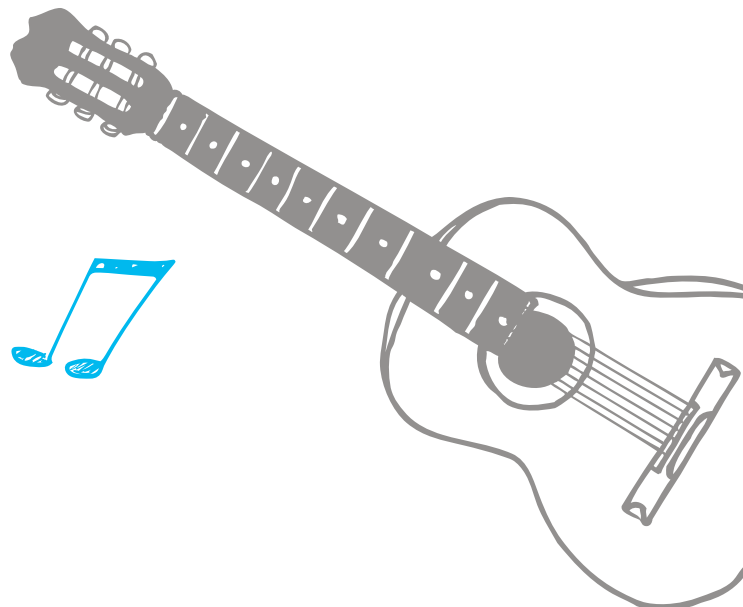
- **Universal Credit (provided you have an annual net earned income of no more than £7,400, as assessed by earnings from up to three of your most recent assessment periods)**
- **Income Support**
- **Income-based Jobseeker's Allowance**
- **Income-related Employment and Support Allowance**
- **Support under Part VI of the Immigration and Asylum Act 1999**
- **The guarantee element of Pension Credit**
- **Child Tax Credit (provided you're not also entitled to Working Tax Credit and have an annual gross income of no more than £16,190)**
- **Working Tax Credit run-on – paid for four weeks after you stop qualifying for Working Tax Credit**

For more information please visit the [direct.gov.uk](http://direct.gov.uk) website.

6. **Cancellation Policy - If you wish to withdraw your child from music lessons, written notice is required as lessons can only be cancelled at the end of a full term providing 6 weeks' notice has been received. You can email this to: [lmsmc@lancashire.gov.uk](mailto:lmsmc@lancashire.gov.uk) DO NOT SEND YOUR CANCELLATION REQUEST TO SCHOOL OR TO COUNTY HALL**

## Instrument Loan Scheme – subject to availability

1. Instruments must be collected and returned to our Warehouse in Chorley.
2. The instrument, including the bow or mouthpiece where applicable, and its case will at all times remain the property of LMS and may be recalled for inspection at any time.
3. LMS will withdraw the instrument and case from the pupil if instrumental tuition ceases and may do so if in LMS's opinion the instrument is not looked after adequately.
4. The instrument will be issued in good playing order. The Music Service will meet all service and repair costs due to normal usage excluding the replacement of consumables (stings, reeds, cork grease, valve oil etc).
5. The parent/carer must accept responsibility for the proper care and safeguarding of the instrument on loan. Guidance on instrument care can be found at: [www.lancashiremusicclub.co.uk/site/parents/find-instruments/](http://www.lancashiremusicclub.co.uk/site/parents/find-instruments/)
6. In the event of damage to, or loss of, the instrument or case LMS must be informed immediately. Under no circumstance should a parent or carer attempt to repair the instrument. Parents/carers will be charged £25 or 10% of the cost, whichever is greater, for repair or replacement due to accidental damage. Parents/carers will be charged the full replacement cost in the case of malicious damage or lost instruments or equipment.
7. Parent/Carers are advised to arrange insurance cover for instruments on loan or arrange for them to be specifically noted on their household insurance policies.
8. Instruments should not be left in an unattended vehicle.
9. The instrument must not be used by any person other than the student to whom it is on loan.
10. Instrument Hire fee is a fixed termly charge (non-refundable) and invoiced at the start of each term. Hire Fees will renew automatically for each new term thereafter until written or email confirmation is provided of withdrawal. Endangered/specialist instruments exempt from charges.
11. Instrument Hire Cancellation Policy – To return the loaned instrument, please contact the Instrument and Warehouse Distribution Team on Tel. **01257 517127** or email: [lmsinstruments@lancashire.gov.uk](mailto:lmsinstruments@lancashire.gov.uk) to arrange a suitable return date.





# Music Centre Instrumental Vocal/Tuition & Ensemble Membership

## Academic Year 2020/21

Lancashire Music Service,  
The Woodlands Centre,  
Southport Road,  
CHORLEY, PR7 1QR.

**APPLY ONLINE** [www.lancashiremusicclub.co.uk/enrol](http://www.lancashiremusicclub.co.uk/enrol)

Email: [msmc@lancashire.gov.uk](mailto:msmc@lancashire.gov.uk)

TUITION INFORMATION		PLEASE COMPLETE USING BLOCK CAPITALS	
Music Centre Name:	Day:	Instrument	
I would like to apply for the following: (Please tick) lessons starting midterm will be invoiced for the remaining weeks of the current term.			
<input type="checkbox"/> Group lesson £7.50 per lesson	<input type="checkbox"/> 20 min individual £12.00 per lesson		
<input type="checkbox"/> 30 min individual £14.00 per lesson	<input type="checkbox"/> 40 min individual £18.00 per lesson (see page 11 for a full breakdown of costs per term).		
I would like to apply for the following ensemble groups/activities (£75 membership per annum, non refundable). For pro-rata charges see page 11.			
1. Name of Ensemble	Instrument		
2. Name of Ensemble	Instrument		
I am an existing member of a County Ensemble (please tick). <input type="checkbox"/> LYSO/LSSO <input type="checkbox"/> LYCB <input type="checkbox"/> LYJO/LSJO <input type="checkbox"/> LYBB			
INSTRUMENT			
<input type="checkbox"/> I will be using my own instrument		<input type="checkbox"/> I would like to hire an LMS instrument	
LMS Instruments are subject to availability and must be collected from our warehouse in Chorley. (Once lessons have been confirmed) For more information please contact <a href="mailto:msinstruments@lancashire.gov.uk">msinstruments@lancashire.gov.uk</a> or call 01257 517127			
<input type="checkbox"/> Hire an instrument: Cornet, Trumpet, Tenor Horn, Baritone/Euphonium, Clarinet, Flute, Alto/Tenor Saxophone, Bass/Acoustic/Electric Guitar, Keyboard, Violin, Drum Kit I would like to hire a _____ at £15.00 per term (non-refundable)			
<input type="checkbox"/> Free instrument loan available for specialist instruments: French Horn, Trombone, Tuba, Oboe, Bassoon, Viola, Cello, Double Bass I would like to loan a _____ (please contact LMS prior to requesting a free loan)			
STUDENT DETAILS			
Surname		First name	
Date of Birth DD/MM/YY		Year group (from Sept 2020)	
Current School			
Equal Opportunities Monitoring (we collect the following information for reporting purposes only)			
<b>Gender</b> <input type="checkbox"/> Male <input type="checkbox"/> Female <input type="checkbox"/> Non-binary <input type="checkbox"/> Prefer not to say			
Do you consider the student to have a disability <input type="checkbox"/> Yes <input type="checkbox"/> No <input type="checkbox"/> Prefer not to say			
Is the student eligible for Pupil Premium <input type="checkbox"/> Yes <input type="checkbox"/> No <input type="checkbox"/> Prefer not to say			
Is the student reported as a "looked after child" <input type="checkbox"/> Yes <input type="checkbox"/> No <input type="checkbox"/> Prefer not to say			
PARENT/CARER DETAILS			
Title:	First name:	Surname:	
Home Address:			
Phone number:		Alternative phone number:	
Email address:			
<b>Lessons cannot be set up without a contact phone number and email address</b>			
BILLING DETAILS (if different from above) If the school is supporting lessons please enter school address and contact details			
Title:	First name:	Surname:	
Billing Address:			
Phone number (bill payer):			
Email address (bill payer):			
I give my consent to the data being processed and collected to facilitate this service. I would like the above named student to receive tuition in the instrument indicated and I understand that by returning this completed form I will be liable for termly payments until written notice is provided of withdrawal. I accept the Lancashire Music Service terms and conditions (see pages 7 & 8).			
Name _____		Date _____	
Your privacy is important to us. For more information view our Privacy Statement at <a href="http://www.lancashire.gov.uk/data-protection">www.lancashire.gov.uk/data-protection</a> and click 'Service and project specific privacy notices' then 'Lancashire Music Service'. The name of the Data Controller is Lancashire County Council. The nominated contact for Data Protection is The Data Protection Officer, P.O. Box 100, County Hall, PRESTON PR1 0LD. This Data will be processed for the purposes of administration of the Music Centre Activities.			
FOR OFFICE USE ONLY		CUSTOMER REF	
CONFIRMED START/INIT	AF REF	LOCATION NO	TEACHER

**Parental/Carer Consent and Medical Information Form  
For Lancashire Music Service Music Centres**

**(This form is to be completed in full by parent/carers and returned to Lancashire Music Service,  
The Woodlands Centre, Southport Road, Chorley PR7 1QR or emailed to [lmsmc@lancashire.gov.uk](mailto:lmsmc@lancashire.gov.uk))**

**Music Centre:** ..... (name of Music Centre) **for academic year 2020/21**

Child's name: ..... Date of Birth: ..... Form/class: .....

Current School: .....

I agree to my son/daughter/ward taking part in the above stated activity and, having read the information booklet, agree to his/her participation in any or all of the activities described. I acknowledge the need for good conduct and responsible behaviour on his/her part and that the service reserves the right to prevent my son/daughter/ward continuing with the activity in the case of poor behaviour. Further, I understand that there would be no entitlement to a refund of monies paid. I agree that I will update the service with any medical information or changes to emergency contact details.

**Emergency Details:**

a) I may be contacted by telephoning the following telephone number(s):

Home: (.....) ..... Work: (.....) .....

Mobile: .....

Name & Address: .....

b) Please state an alternative contact point: - Telephone number: (.....) .....

Name & Address of Contact: .....

**Other Information:**

**Please supply information about medical conditions, medication, allergies, recent illness, special requirements which may affect him /her in this activity:**

.....

.....

I give my consent for images and video of my child to be used for marketing and publicity purposes by Lancashire Music Service. YES  NO  (please tick box)

**Declaration by Parent/Carer:**

- In the case of an emergency I agree to my child being given any medical, surgical or dental treatment, including general anaesthetic and blood transfusion, as considered necessary by the medical authorities present.
- I consent to my child taking part in the activity and, having read the information, declare my child to be in good health and physically able to participate in any activities mentioned; subject to any agreed adjustments.
- I have noted where and when the activity is taking place I understand that I am responsible for my child getting safely to and from that place.
- I will ensure that any change in the circumstances (eg recent illness, medication or injury) which will affect my child's participation in the activity will be notified to the Service.

**Signature of Parent/Carer** ..... **Date**.....

(Parental/Carer consent required for children aged 17 and under)

Name of parent/carers in block letters: .....

Address: .....

.....

This completed form to be returned to Lancashire Music Service, The Woodlands Centre, Southport Road, Chorley PR7 1QR.

---

**In the case of the participant being 18 years of age and above, the form must be signed by them to confirm the accuracy of information, and consent to any necessary medical treatment.**

# Calendar and Charges

## Music Centre Calendar Academic Year 2020-2021

34 Music Centre sessions. If there is a date change to the standard pattern highlighted, you will be notified by the Head of Centre.

September 2020						
Sun	Mon	Tue	Wed	Thur	Fri	Sat
		1	2	3	4	5
6	7	8	9	10	11	12
13	14	15	16	17	18	19
20	21	22	23	24	25	26
27	28	29	30			

October 2020						
Sun	Mon	Tue	Wed	Thur	Fri	Sat
				1	2	3
4	5	6	7	8	9	10
11	12	13	14	15	16	17
18	19	20	21	22	23	24
25	26	27	28	29	30	31

November 2020						
Sun	Mon	Tue	Wed	Thur	Fri	Sat
1	2	3	4	5	6	7
8	9	10	11	12	13	14
15	16	17	18	19	20	21
22	23	24	25	26	27	28
29	30					

December 2020						
Sun	Mon	Tue	Wed	Thur	Fri	Sat
		1	2	3	4	5
6	7	8	9	10	11	12
13	14	15	16	17	18	19
20	21	22	23	24	25	26
27	28	29	30	31		

January 2021						
Sun	Mon	Tue	Wed	Thur	Fri	Sat
					1	2
3	4	5	6	7	8	9
10	11	12	13	14	15	16
17	18	19	20	21	22	23
24	25	26	27	28	29	30
31						

February 2021						
Sun	Mon	Tue	Wed	Thur	Fri	Sat
	1	2	3	4	5	6
7	8	9	10	11	12	13
14	15	16	17	18	19	20
21	22	23	24	25	26	27
28						

March 2021						
Sun	Mon	Tue	Wed	Thur	Fri	Sat
	1	2	3	4	5	6
7	8	9	10	11	12	13
14	15	16	17	18	19	20
21	22	23	24	25	26	27
28	29	30	31			

April 2021						
Sun	Mon	Tue	Wed	Thur	Fri	Sat
				1	2	3
4	5	6	7	8	9	10
11	12	13	14	15	16	17
18	19	20	21	22	23	24
25	26	27	28	29	30	

May 2021						
Sun	Mon	Tue	Wed	Thur	Fri	Sat
						1
2	3	4	5	6	7	8
9	10	11	12	13	14	15
16	17	18	19	20	21	22
23	24	25	26	27	28	29
30	31					

June 2021						
Sun	Mon	Tue	Wed	Thur	Fri	Sat
		1	2	3	4	5
6	7	8	9	10	11	12
13	14	15	16	17	18	19
20	21	22	23	24	25	26
27	28	29	30			

July 2021						
Sun	Mon	Tue	Wed	Thur	Fri	Sat
				1	2	3
4	5	6	7	8	9	10
11	12	13	14	15	16	17
18	19	20	21	22	23	24
25	26	27	28	29	30	31

August 2021						
Sun	Mon	Tue	Wed	Thur	Fri	Sat
1	2	3	4	5	6	7
8	9	10	11	12	13	14
15	16	17	18	19	20	21
22	23	24	25	26	27	28
29	30	31				

34 Teaching Weeks

LMS Holidays

LMS Inset – Tutors unavailable

Floating week for rescheduled sessions

Bank Holidays

All forms/online applications must be received into the Lancashire Music Service Office by the deadline dates shown.

**Applications received after the deadline for instrumental tuition will be processed for the following half-term's intake.**

Application Deadlines	Term Start Dates	Number of weeks	Group £7.50 p/lesson	20 min individual £12.00 p/lesson	30 min individual £14.00 p/lesson	40 min individual £18.00 p/lesson	Ensemble membership £75.00 p/annum
17.08.20	21.09.20	11	£82.50	£132.00	£154.00	£198.00	£30.00
05.10.20	*02.11.20	6	£45.00	£72.00	£84.00	£108.00	£15.00
07.12.20	04.01.21	11	£82.50	£132.00	£154.00	£198.00	£30.00
01.02.21	*22.02.21	5	£37.50	£60.00	£70.00	£90.00	£15.00
08.03.21	12.04.21	12	£90.00	£144.00	£168.00	£216.00	£30.00
10.05.21	*07.06.21	5	£37.50	£60.00	£70.00	£90.00	£15.00

\* Mid-term intake

# Music Centres

2020 - 2021

Get the latest

Visit [www.lancashire.gov.uk](http://www.lancashire.gov.uk) and sign up for regular updates

 [Facebook.com/lancashirecc](https://www.facebook.com/lancashirecc)  [Twitter.com/lancashirecc](https://twitter.com/lancashirecc)